

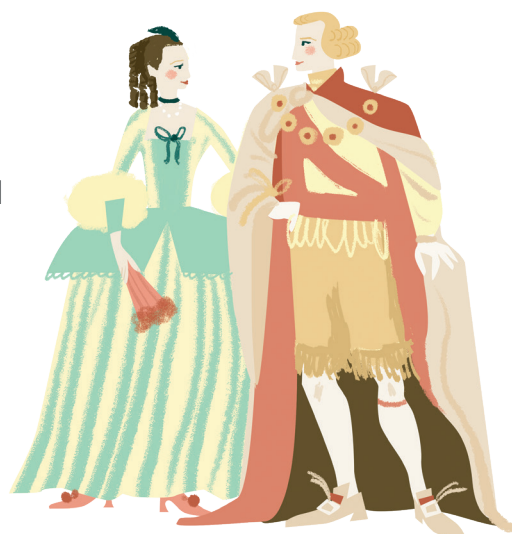
Educational Visits



Alnwick Castle welcomes school groups of all ages for trips and visits during UK term-time. Explore the castle; take part in exciting workshops and tours; and immerse yourself in the history of this amazing place!

- Explore the highlights of the castle grounds, State Rooms and historic Kitchens
- Enjoy the medieval environment of Artisans Courtyard
- Meet the castle's resident dragon in Dragon Quest
- Visit the castle museums and Fusiliers Museum of Northumberland

Every school group visiting Alnwick Castle will also have access to our fantastic Education Team.



Essential Information

Alnwick Castle is open from **late March – late October** from 10am – 5pm.

Admission for school visits is **£7.30 per pupil**, with one **free** adult for every 5 primary pupils or 10 secondary pupils.

Tours and workshops are priced at **£37 per session**. Workshop bookings include pre-visit and post-visit activities and a teacher's resource pack.

Broomstick Training is priced at **£80 per session**.



Contact Us

To find out more or to make a booking, you can:

Email

education@alnwickcastle.com

Phone 01665 511794

Visit alnwickcastle.com/education

Alnwick Castle
Alnwick, Northumberland
NE66 1NQ



Tours and Talks

If you want to know more about Alnwick Castle, why not book a guided tour or talk with one of our knowledgeable team!

Popular subjects include:

- The castle grounds
- The State Rooms
- Castle filming locations
- Alnwick Castle's art collection
- The medieval castle.

If there is a particular topic you are studying, please get in touch to arrange a bespoke tour or talk tailored to your topic.

Tours and talks can be adapted for any age group, including higher education.



Workshops

Alnwick Castle has a range of exciting, interactive workshop sessions available for visiting school groups:

Castle Defences: Storming the Barbican (KS1-2)

Take on the roles of English and Scottish armies and recreate an attack on Alnwick Castle in its medieval Barbican and gatehouse!

Castle Life (KS1-2)

Meet people who would have lived in a castle like Alnwick during the medieval period, and learn about the work done by artisans, knights and nobles.

Storytelling: the life of Harry Hotspur (KS1)

Help our storyteller reveal the adventures of famous knight Harry Hotspur in a tale full of fun (and audience participation)!

The Wizard Earl of Northumberland (KS2)

Henry Percy, who lived at Alnwick Castle in the Tudor period, was known as the 'Wizard Earl'. Discover some of the scientific subjects that fascinated him.

Castle Defences: Fantasy Fortress (KS3)

Discover how Alnwick Castle was created for defensive and domestic purposes – then work together to create your own model castle!



New for 2025

A Victorian Banquet (KS1-2)

Join the cook and the kitchen maid in Alnwick Castle's Victorian kitchens to learn about food from the past, and decide on the menu for a grand dinner!

As well as our workshop sessions, visiting school groups can book their own session of our famous **Broomstick Training** activity!

